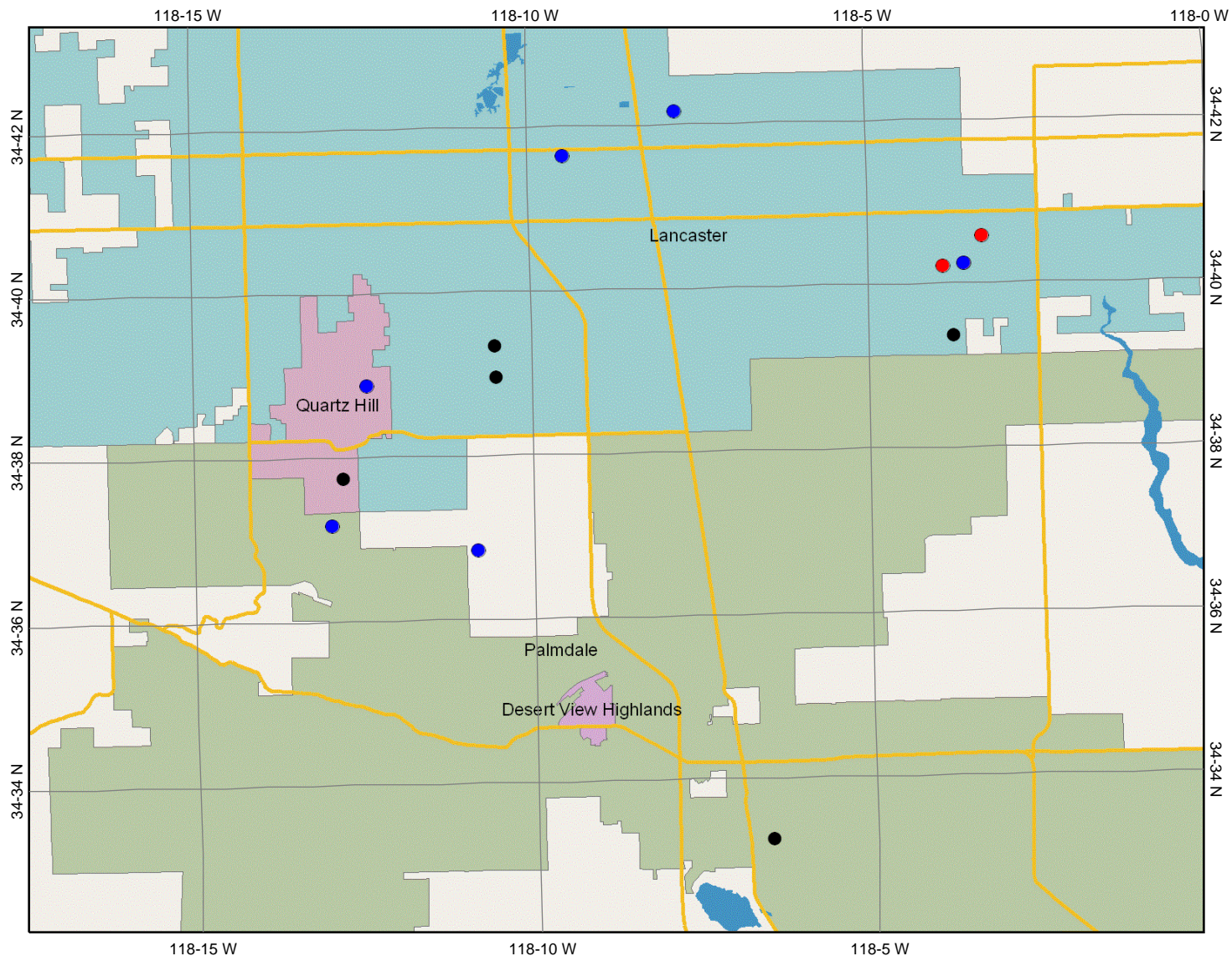


WNV in the AV as of 9/4/14



Legend

- Latest Positive Chickens
- Latest Positive Mosquito Pools
- YTD Positive Dead Birds
- YTD Positive Chickens
- YTD Positive Mosquito Pools
- Prior YTD Positive Dead Birds
- Prior YTD Positive Chickens
- Prior YTD Positive Mosquito Pools
- Sentinel Chicken Sites
- Mosquito Pool Sites
- Surveillance Sites
- Prior Sentinel Chicken Sites
- Prior Mosquito Pool Sites
- Prior Surveillance Sites
- DYCAST High Risk (p <= 0.05)
- DYCAST High Risk (p <= 0.1)
- Interstates and Highways
- Lakes and Rivers
- Counties
- States
- Other countries
- Ocean

0 4.25 8.5 12.75 km.

Map center: 34°37' N, 118°8' W



Scale: 1:143,010

This map is a user generated static output from the map component of the California Vectorborne Disease Surveillance Gateway and is for general reference only. Data layers that appear on this map may or may not be accurate, current, or otherwise reliable.